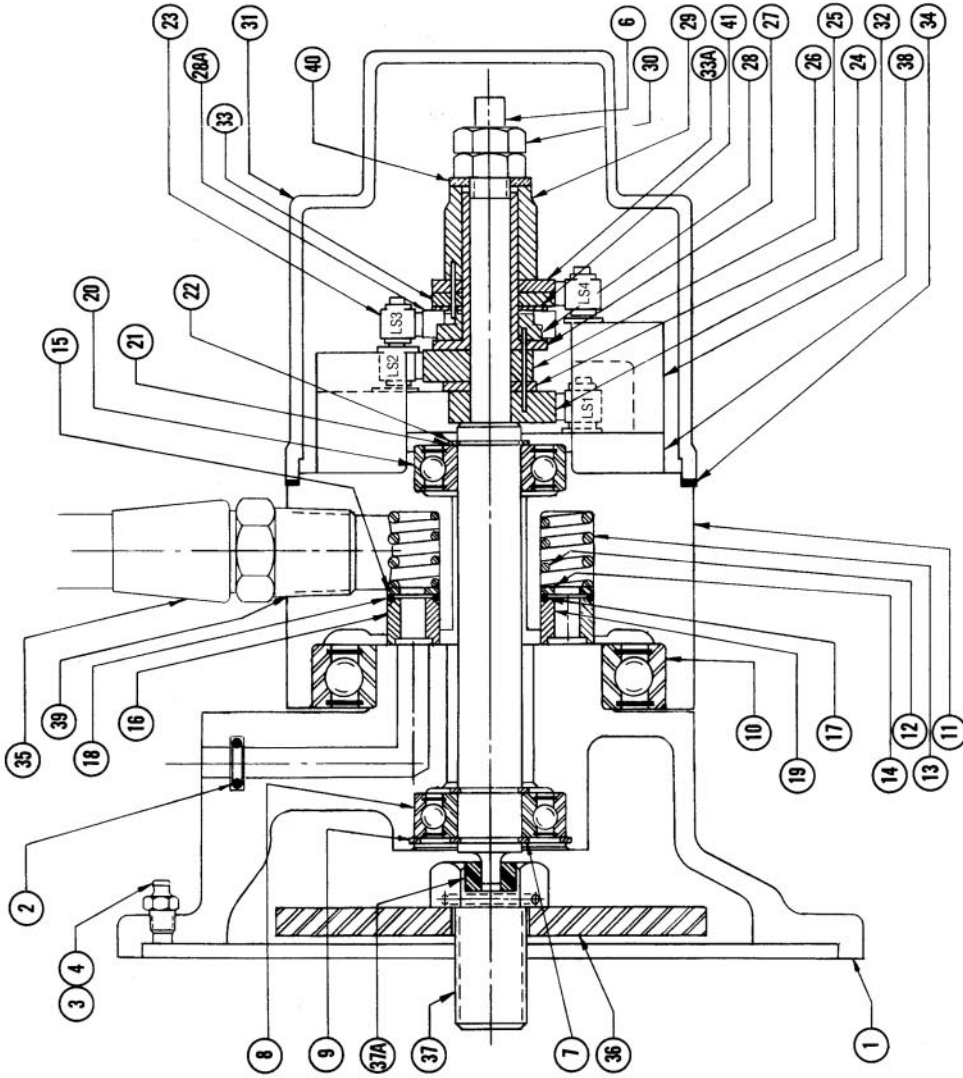


# 4.0 PARTS LIST

Item No.	Part No.	Description	No. Req.
1.	See table A	Adapter "O" ring	1
2.	See table A	Relief fitting	1
3.	145 x 30	Grease fitting	1
4.	145 x 2	Shaft	1
6.	304123	Snap ring	2
7.	139 x 12	Bearing	1
8.	159 x 57	Snap ring	1
9.	138 x 10	Bearing	1
10.	159 x 40	Center section	1
11.	403957	Inner spring	1
12.	201685	Outer spring	1
13.	201677	Inner washer	1
14.	201693	Outer washer	1
15.	201694	Outer seal	1
16.	301965	Inner "O" ring	1
17.	73 x 133	Outer "O" ring	1
18.	73 x 134	Inner seal	1
19.	201686	Bearing	1
20.	159 x 57	Shim set	1
21.	144 x 46*		1

\*Use as necessary.



\*\*Used on Timing Rotorseals for FSPA's 01 thru 114.

The part no. for the complete assembly is stamped on the timer decal. Identify the timer with this number when specifying component parts.

TABLE A

FSPA No.	Part No.			
	Item No. 1 Adapter	Item No. 2 "O" Ring Qty.	Item No. 35 Air Hose	Item No. 36 End Plate
01	408441	73 x 89 2	318 x 2	410743-30
1.2, 103, 104, 105	408441	73 x 89 2	318 x 2	410743-1
6, 7, 8	412842	73 x 89 4	318 x 2	410743-60
109, 110, 111	412842	73 x 89 4	318 x 2	410743-2
112, 113, 114	509852	73 x 89 4	318 x 2	410743-3
115, 116, 117	509853	73 x 15 4	318 x 4	410743-3
118, 119, 120, 121, 122	505382	73 x 15 4	318 x 4	410743-11

TABLE B

509425	Complete Assembly Part No. Used On:										Direction of Rotation	Part Number*						
	FSPA 01	FSPA 145744 GX	FSPA 145744 GY	FSPA 145744 GZ	FSPA 145744 HA	FSPA 145744 HE	FSPA 145744 HN	FSPA 145744 HJ	FSPA 145744 HW	FSPA 145744 HT		FSPA 145744 HU	Item No. 23 - Breaker Points	Item No. 24 - 1 Cam	Item No. 26 - 2 Cam	Item No. 28 - 3 Cam	Item No. 33 - 4 Cam	Item No. 38A - 5 Cam
	104, 105	6, 7, 8	109, 110, 111	112, 113, 114	145744 GP	145744 GT	145744 HF	145744 HG	145744 HK	145744 HL	133 x 201	201856	201857	306029	306256	203257		
	104, 105	6, 7, 8	109, 110, 111	112, 113, 114	145744 GQ	145744 GR	145744 HS	145744 HT	145744 HU	145744 HV	133 x 200	201858	201859	306028	203254	203255		
	104, 105	6, 7, 8	109, 110, 111	112, 113, 114	145744 GS	145744 GT	145744 HW	145744 HH	145744 HM	145744 HN	133 x 201	201861	201862	306029	203256	203257		
	104, 105	6, 7, 8	109, 110, 111	112, 113, 114	145744 GS	145744 GW	145744 HJ	145744 HK	145744 HL	145744 HM	133 x 200	201863	201864	306028	203254	203255		

## TIMING ROTORSEAL

Part No. for Optional Cam No. 3 (Item No. 28A), is as follows:  
 203002 (For clockwise and clockwise 30° dwell)  
 203087 (For clockwise and c clockwise 30° dwell)